

THE LOG

April / May 2026

Inside This Issue:

- 3 Change is the only Constant in the Hardwood Lumber Industry
- 4 Change is the only Constant in the Hardwood Lumber Industry (cont'd)
- 5 GLKDA Spring Meeting
- 6 Hardwood Federation Update
- 7 Meet Our Members
- 7 Sawing, Edging and Trimming Class
- 8 MI Legislative Report
- 9 WI Legislative Report
- 9 2026 Buyers Guides
- 10 Hardwood Lumber Grading Shortcourse
- 11 Where Is David Bradley?

Lake States Lumber Association

Address:
337 Superior Avenue
Crystal Falls, MI 49920

Website:
www.lsla.com

Email:
lsla@lsla.com

Phone:
(920) 884-0409

Fax:
(906) 875-3724

LETTER FROM THE PRESIDENT

Hello Members,

As we transition into spring, I hope your local weather patterns are finally drying out, warming up. Here in Iowa, we have been teased with spring since early March. We've seen temperatures swing from 70 degrees down to 15 degrees in the blink of an eye. Going from sunburns to winter coats within 48 hours is less than ideal, and I'm sure many of you across the Lake States can relate to a similar weather pattern.

We have also moved quickly from drought conditions to receiving one to three inches of rain at a time over the last few weeks. To say the weather has been unique would be an understatement.

Despite the unpredictable skies, the LSLA Education Committee has a productive summer planned with several high-value courses designed to sharpen our workforce. Please review the following dates and consider which members of your team would benefit from these sessions:

- OSHA Safety Class: May 22nd
- Lumber Grading Short Course: July 27th – 29th
- Sawing, Edging, & Trimming Class: July 30th
- Teacher Forest Products Bootcamp: August 5th – 6th

In addition to our education tracks, we have a major networking opportunity coming up in July. This year's LSLA Summer Golf Outing will be held on July 22nd – 23rd in Lake Geneva. It is a fantastic chance to step away, reconnect with peers, and enjoy some golf!

Please also mark your calendars for the Hardwood Federation Fly-In in Washington, D.C., taking place June 9th – 10th. This is our primary opportunity to ensure our voices are heard on Capitol Hill regarding the legislative issues that impact your bottom line

I look forward to seeing you all at one of these events this summer!

Kirby Kendrick LSLA President
Kendrick Forest Products
kirby@kendrickinc.com



Lake States Lumber Association, Inc...
Providing Leadership and Education to assure the sustainability of our forest resources

LSLA CALENDAR OF EVENTS

OSHA Safety Class
May 22

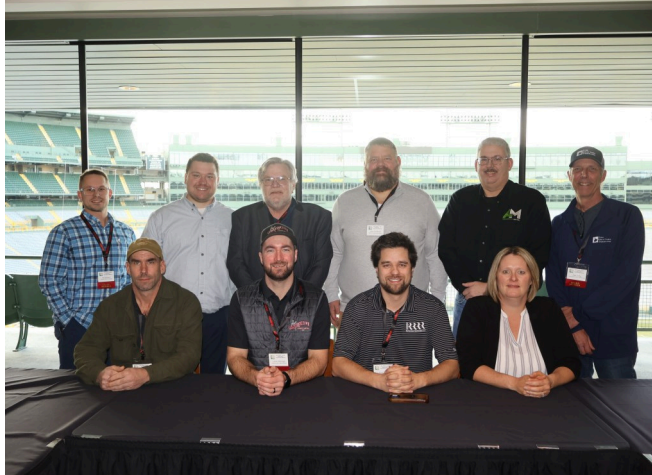
Board Meeting and Fish Fry
June 10

Summer Golf Outing
July 22-23

Hardwood Lumber Grading Short Course
July 27-29

Sawing, Edging and Trimming Class
July 30

Watch for details of these and other upcoming events



Back Row (left to right): Bill Millard (Granite Valley Forest Products/Rockbridge Sawmill), Kirby Kendrick (Kendrick Forest Products), Steve Peters (Rockland Flooring), Dale Kleffman (Loggers Insurance and Mauck Insurance), Dave Kuehl (A & M), John Yeshe (Lyme Great Lakes Timberlands)

front Row (left to right): Jamie Peters (North Country Lumber), Loren DeJonge (Constructive Sheet Metal), Kyle Jeske (Richardson Hardwoods), Nikki Loehr (LSLA Administrative Coordinator)

Missing: Kate Miller (Northern Hardwoods/JM Longyear), Tammy Sue Donaldson (Beaam Hardwoods),

Photo courtesy of Chris Fehr, Miller Wood Trade Publications

The Log is published bi-monthly by the Lake States Lumber Association, Inc. For address corrections or to contribute news articles, opinion pages, or advertising, contact us at:

337 Superior Avenue
 Crystal Falls, MI 49920
 Phone: (920) 884-0409
 Email: lsla@lsla.com

2026 LSLA EDUCATION, INC. BOARD OF DIRECTORS

Tim Kassis President
 Scott Shaver Secretary/Treasurer
 Logan Wells Director
 John Gehringer Director
 Scott Lyon Director
 James Hubbard Director
 Bill Millard Director

2026 LAKE STATES LUMBER ASSOCIATION BOARD OF DIRECTORS

Kirby Kendrick.....President
 Bill Millard Vice President
 Kyle Jeske Treasurer
 Loren DeJonge Secretary
 Steve Peters Director
 Kate Miller Director
 Dave Kuehl Director
 John Yeshe Director
 Tammy Sue Donaldson Director
 Jamie Peters Director
 Dale Kleffman Director

Change is the only Constant in the Hardwood Lumber Industry

By Scott Bowe, UW-Kemp Station

The hardwood lumber industry has navigated significant changes over the past 25 years, marked by shifting global markets, domestic economic shocks, and a fundamental realignment of its primary consumers. From its peak production in the late 1990s to the complex, trade-dependent sector it is today, the industry's evolution reflects broader trends in the American and global economies.

The Peak and the Pivot: A Departure from the 1990s

At the turn of the millennium, the U.S. hardwood industry was at a historic high. Eastern U.S. hardwood production reached its peak in 1999, with an estimated 12.6 billion board feet (Figure 1). During this era, the domestic furniture industry remained a dominant force, consuming a significant portion of high-grade lumber.

However, the early 2000s ushered in a major structural shift – the offshoring of U.S. furniture manufacturing. By 2002, the domestic furniture sector's share of total U.S. hardwood lumber consumption had fallen to roughly 16%, down from a 1963 peak of 35%. As furniture factories moved overseas, the industry pivoted its focus toward the housing and construction markets, which were entering a period of robust growth. The Lake States were not isolated from these changes. Richardson Brothers was a well-known national name brand in hardwood dining furniture based in Sheboygan Falls, Wisconsin. After 150 years in business, they were forced to cease domestic manufacturing in the early 2000s, eventually becoming a brand name for imported goods before disappearing. Widdicomb Furniture Company, once a titan of furniture in Grand Rapids, Michigan, saw its final iterations fade away in the early 2000s as high-end domestic production costs became unsustainable. La-Z-Boy of Michigan, though known for upholstery, their wood "case goods" division (dining/bedroom) moved almost entirely to Asian sourcing (China and Vietnam) in the mid-2000s. However, Ashley Furniture maintains a massive presence in Arcadia, WI, they became the industry leader by becoming early adopters of a dual-sourcing model, building massive plants in China to supplement U.S. production.

The Housing Crisis: A Defining Downturn

The housing market crash of 2007–2008 remains the most significant disruption to the hardwood industry in recent history. The crisis profoundly reduced demand for "appearance-based" hardwood products, such as cabinetry, flooring, and millwork.

The impact was visible in every metric:

- **Production:** Hardwood lumber production hit a deep low point in 2009 (Figure 1).

Employment: Employment in related sectors, such as wood kitchen cabinets and millwork, is highly correlated with single-family housing starts and saw dramatic declines during this period.

Industry Footprint: The number of hardwood sawmills and employees has steadily declined since 2005. By 2011, single-family housing starts reached a record low, just six years after their 2005 peak.

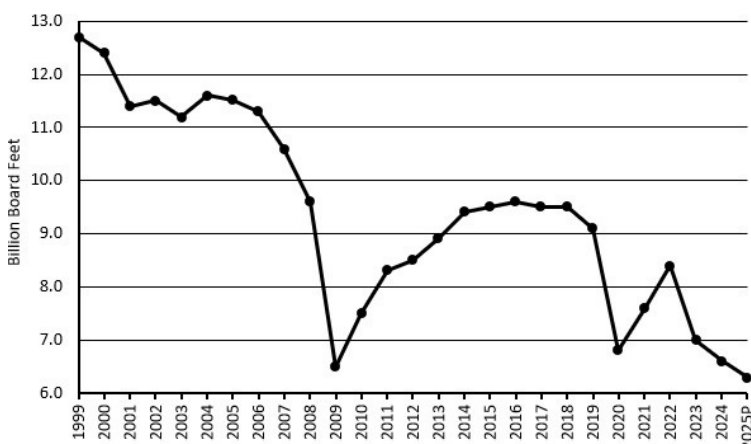


Figure 1. Eastern U.S. hardwood lumber production estimates (Luppold and Bumgardner 2017; Bumgardner 2026).

During the worst years of the crisis (2009–2011), the value of single-family construction even dropped below that of residential improvements & remodeling (Figure 2), as foreclosed homes required maintenance to become marketable.

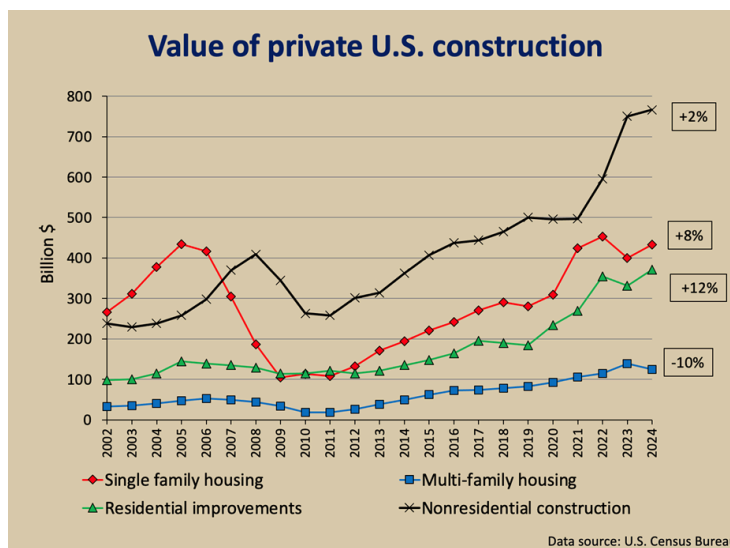


Figure 2. Value of private US construction put in place, 2002 to 2024.

(Continued on page 4)

Change is the only Constant in the Hardwood Lumber Industry (cont'd)

The Rise of the Export Market and the "China Factor"

As domestic demand for high-grade lumber faltered during the housing crisis, exports became a lifeline for the industry. The percentage of total hardwood lumber consumption attributed to exports more than doubled from 8% in 1991 to 17% by 2014 (Figure 3).

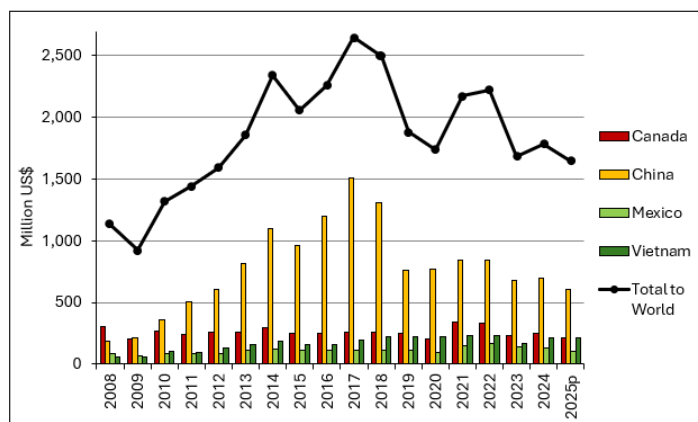


Figure 3. Top four destinations and world total for U.S. hardwood lumber exports (Data: USDA Foreign Agricultural Service).

China emerged as the single most important player in this new era. Its share of U.S. hardwood lumber exports surged from 16% in 2008 to 57% in 2017. By 2017, China was the largest export destination by a wide margin, accounting for \$1.5 billion of the \$2.6 billion in total hardwood exports (Figure 3). This shift created an unprecedented level of interconnectedness between U.S. sawmills and global economic events.

Industrial Markets: The New Foundation

Another critical change over the last quarter-century has been the increased importance of industrial markets—such as pallets, packaging, barrels, and railway ties—for lower-value products. In the absence of strong furniture and housing markets, these "low-grade" sectors have become the largest domestic consumers of hardwood lumber.

By 2014, industrial products accounted for 51% of total hardwood lumber consumption, up from 39% in 2002. This shift underscores the industry's need to find consistent outlets for the entire log, not just the high-grade material used in appearance-based products.

Recent Challenges: COVID-19 and Trade Volatility

The last five years have introduced new layers of complexity. The industry faced another significant downturn in 2020 due to COVID-19 disruptions. While the market briefly recovered, 2023 brought a new decline driven by slowing global demand, a cooling housing market, and competition

from substitute materials that continue to gain market share in several sectors. Substitute products, such as Luxury Vinyl Tile (LVT) and Luxury Vinyl Plank (LVP), have gained market share from solid and engineered hardwood flooring. LVT grew from representing roughly 28.7% of total flooring dollars in 2020 to over 34% by 2022. By 2024, LVT/LVP was projected to surpass carpet as the most popular flooring product in the US. The primary drivers were the COVID-19-era renovations, where consumers prioritized DIY-friendly, waterproof, and durable materials, particularly in kitchens and bathrooms. Technological advancements allowed LVT to closely mimic the appearance of hardwood at a lower price point. LVT also had some clever marketing working in its favor. Since when is plastic flooring a luxury!

Trade policy has also become a central concern. The 2018–2019 trade dispute with China had a lasting impact, and as of late 2025, the industry remains deeply focused on negotiations regarding tariffs and purchase requirements. Reports indicate that while framework deals have been agreed upon, commitments for hardwood lumber purchases have not always been met, leading to ongoing advocacy for federal trade assistance.

Looking Forward

The hardwood industry of today is leaner and more globalized than the one that entered the 21st century. While the number of establishments has fallen—the rate of decline accelerated during the housing crisis before leveling off around 2014—surviving companies have seen some stabilization.

Current trends suggest that while single-family housing remains the "gold standard" for demand, multi-family housing and remodeling will play increasingly important roles. Furthermore, the industry continues to explore innovations, such as cross-laminated timber, that could allow hardwoods to make inroads into nonresidential construction.

The last 25 years have proven that the hardwood industry is resilient, but its future depends on navigating a world where global trade, macroeconomic housing trends, and industrial efficiency are more tightly linked than ever before.

Scott Bowe is a Professor of Wood Products located at Kemp Natural Resources Station in Woodruff, Wisconsin.

Data for this article was based on research provided by Matthew Bumgardner, Research Forest Products Technologist with the USDA Forest Service.



Great Lakes Kiln Drying Association Spring Meeting

May 7 and 8, Welch, MN

You are invited to attend the Great Lakes Kiln Drying Association's 2026 Spring Meeting in Welch, MN.

On Thursday May 7, we will spend the day touring Bee Forest Products in Nelson, WI and then off to lunch at J & J BBQ. After lunch we will head to Rockland Flooring in Redwing, MN. Once we complete the tour at Rockland Flooring, we will meet at the Redwing Boot Store & Museum for everyone to check out the store and museum on a self-guided tour.

"Stress Relief" and dinner will be at the Treasure Island Resort & Casino and will provide opportunities for networking.

On Friday May 8, the schedule offers sessions with valuable information, as well as networking with others in our industry. We will conclude the Meeting with an Open Forum that will give everyone an opportunity to ask questions.

We hope to see you all at the 2026 Spring Meeting.

John Gehringer, GLKDA President

Meeting Location & Accommodations

Treasure Island Resort & Casino
5734 Suturgeon Lake Road
Welch, MN 55089
(800) 222-7077

Room Cost \$109 plus taxes and fees

Registration

\$150 per person (GLKDA Member)

\$175 per person (Non-Member)

\$40 spouse or guest (attending Thursday lunch and dinner)

Email GLKDA for a registration form at glkda.org or the form is located on the GLKDA.org website.

Questions? Call (906) 875-3720

PROGRAM AGENDA

Thursday, May 7

9:45-10:00am MEETING REGISTRATION:

Bee Forest Products

S1130 WI-25, Nelson WI

10:00-11:00am TOUR: Bee Forest Products

11:00-12:00pm LUNCH: J & J BBQ

208 N. Main Street, Nelson WI

1:00-2:45pm TOUR: Rockland Flooring

2720 N. Service Drive

Redwing, MN

3:00-4:45pm TOUR: Redwing Boot Store & Museum

(Self Guided) 315 Main Street

Redwing, MN

5:00-6:00pm STRESS RELIEF: Wolf Room at hotel

6:00-7:00pm DINNER: Wolf Room at hotel

Friday, May 8

8:00am BREAKFAST: Wolf Room at hotel

9:00am Boiler & Kiln Safety

Brian Labouf - MI Association of Timbermen Self Insurance Fund

10:00am WI Wood Use

Scott Lyon - WI DNR

11:00am TBD

11:45am Newtworking Break

12:00pm Open Forum

Hardwood Federation Update

By Dana Lee Cole, Executive Director



Renewable Fuel Standard: Why Isn't Woody Biomass a Potential Fuel?

A forestry and forest products value chain issue that has emerged and become hotly debated with increasing frequency over the last couple of years is related to a long-standing liquid transportation fuel mandate known as the Renewable Fuels Standard or RFS. Originally enacted in 2005 and then refined in 2007 as part of the Energy Independence and Security Act (EISA), the RFS requires growing volumes of biofuels to be blended into U.S. transportation fuel supplies of gasoline and diesel. EPA just finalized a rule in late March setting the annual (2026) number of renewable fuel gallons to be blended into the U.S. supply at almost 26 billion gallons. Despite this considerable volumetric mandate, the underlying law is an anomaly. Instead of deploying an “all of the above” approach in tapping renewable feedstock sources, the statute imposes overly restrictive conditions on eligibility for fuels derived from forest-based biomass. In the law’s definition of “renewable biomass,” fiber from private tree plantations is eligible, but only on those lands cleared prior to enactment—December 19, 2007. Slash and precommercial thinnings qualify, but whole trees do not. And fiber from federal lands is strictly prohibited. These definitional restrictions were negotiated and secured by the Natural Resources Defense Council based on environmentalists’ concerns around widescale conversion of natural forests to pine plantations to fulfill anticipated renewable fuel demand.

With markets for forest fiber and residuals in a down cycle, the chorus of stakeholders urging expansion of the definition is growing louder. Private industrial forest landowners who see a potential market growth opportunity for their assets have led efforts over the years to revise the definition and open up eligibility for fuels derived from private working forestlands. The challenge politically has been that this definition is deeply embedded in the Clean Air Act and there has been consensus among legal experts that any revision would necessitate a legislative reopening of that statute. In Washington, amending a landmark statute like the Clean Air Act or Resources Conservation and Recovery Act in a rifle-shot fashion is nearly impossible. Such efforts attract a lot of attention, both from opponents and ancillary stakeholders looking to “shoehorn” in their priorities on any moving legislative vehicle. Moreover, there is very little appetite in Congress right now for moving clean air legislation. That is why forest landowners were pushing hard for EPA to try to modify the definition in its recently completed RFS rulemaking mentioned above. The Agency did seek comments on the renewable biomass definition during this process but ultimately did not make any changes to it. This action officially closes the regulatory chapter of this issue for now.

So, what comes next? Advocates for an expanded renewable biomass definition—Hardwood Federation included—will continue to push on Congress to act. With recent pulp and paper mill closures in South Carolina and elsewhere in the southeast, falling demand in some of these fiber baskets has loggers, landowners and sawmill operators viewing the situation with increased urgency. Key lawmakers too understand the plight of those seeking more markets for forest fiber and residuals. Senate Agriculture Committee Chairman John Boozman (R-AR), in opening remarks during his panel’s consideration of the Fix our Forests Act, underscored his belief that forest-derived liquid biofuels should be eligible under the RFS mandate. He noted, however, that his committee does not have jurisdiction over the Clean Air Act and pledged to work with Senate Environment and Public Works Committee Chair Shelley Moore Capito (R-WV) on a solution.

The issue takes on added complexity with the fact that the entire forest products value chain is not in agreement. While forest landowners have been pushing hard to create a market pathway in the RFS, the pulp and paper sector continues to oppose these efforts. The opposition is borne out of concern that potential demand for forest fiber, should forest-based liquid transportation fuel production actually scale, could threaten affordability and availability of their feedstock. Advocates for the pulp and paper industry have been effective in communicating these concerns with key committee chairs in Congress. In recent communications from Congressional leaders, it is clear that any viable legislative fix would have to include language protecting wood fiber sourcing areas around pulp and paper facilities. Negotiations are ongoing around specifics and whether it is even possible to fashion language that would thread the needle between need for increased market demand and protections for existing users of forest fiber.

Despite EPA’s inaction on rewriting a RFS biomass definition, the issue shows no signs of abating. The Hardwood Federation will continue to work with our upstream supplier allies and our brethren in the softwood sector in trying to find a workable solution to this problem. Healthy markets for the forest resource are the engines that power the cycle of sustainability. Without them, forestland conversion to agriculture or development is inevitable. The Federation team will continue to work this message in our meetings with Members of Congress in hopes that a compromise may ultimately be forged.

Meet our Members

Superior Insurance Agency of Sault Ste. Marie LLC

3175 I-75 Business Spur
Sault Ste. Marie, MI 49783
Denise Brummett
Phone: (906) 630-2336
Website: www.superiorsault.com



SUPERIOR

insurance agency

Superior Insurance Agency of Sault Ste. Marie LLC, pride themselves on being an independent agency dedicated to serving the unique insurance needs of Michigan residents. Their team of experienced professionals is committed to providing knowledgeable guidance and a selection of reputable insurance companies to help protect your personal, commercial, life, and health insurance needs. They believe in the power of education and personalized service, helping you feel confident in your insurance decisions. Their history is built on a foundation of integrity, expertise, and a dedication to serving their community.

Sawing, Edging and Trimming Class

Do you have new employees in need of training on sawing, edging, or trimming? Could your current employees benefit from reviewing the basic processing concepts to better avoid common mistakes? Do you want to stop sending dollar bills into the hog? Join LSLA Education, Inc. for a one-day workshop on sawing, edging, and trimming on Thursday, July 30 at Northcentral Technical College Wood Technology Center of Excellence in Antigo, WI. This course will cover the basics of NHLA grading rules, sawing for recovery, and edging and trimming requirements. Bottom dollar issues of upgrade and increased recovery will be emphasized.

Registration Fee: (includes class materials and lunch)
\$250 LSLA Members
\$350 Non-Members
Course is limited to 24 registrations.

Registration Link:
<https://www.ntc.edu/calendar/2026/07/30/lsla-sawing-edging-and-trimming-workshop>

Instructors:
Logan Wells, Northcentral Technical College
Tim Kassis, Kassis Consulting
Scott Bowe, UW-Kemp Station
Scott Lyon, WI DNR

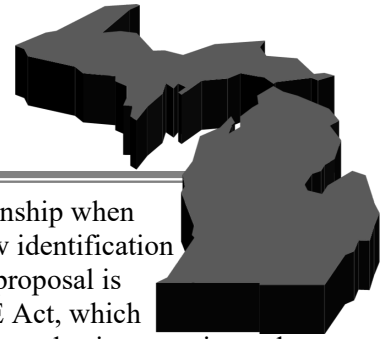
Schedule

- 8:00 - 9:00 Registration & Coffee
- 9:00 - 12:00 Classroom Presentations:
 - Basic NHLA Grading Rules
 - Sawing for Grade
 - Edging and Trimming Requirements
 - Upgrading Boards
- 12:00 - 1:00 Lunch
- 1:00 - 4:00 Sawmill Demonstrations:
 - Sawing for Grade Demonstrations
 - Edging and Trimming Demonstration
 - Value Comparisons: Sawing for Grade



Michigan Legislative Report

By Scott Everett, MI Legislative Consultant



Northern Michigan Wash Out

During the week of April 12, fourteen county-controlled bridges have been closed or washed out by rushing Northern Michigan floodwaters. A late (March 14) Northern Michigan snowstorm melt off and heavy rain turned trickling streams into gushing rivers in what the Michigan Department of Transportation described as a 500-year flood. Governor Whitmer's State of Emergency Declaration includes: Alcona, Allegan, Alpena, Antrim, Arenac, Barry, Benzie, Charlevoix, Clare, Crawford, Emmet, Grand Traverse, Gratiot, Iosco, Kalkaska, Lake, Leelanau, Manistee, Menominee, Missaukee, Montcalm, Montmorency, Newaygo, Oceana, Ogemaw, Oscoda, Osceola, Presque Isle, Roscommon, Saginaw, Shiawassee and Wexford counties.

R & D Conventions Complete

Both the Republicans and Democrats have now held their nomination conventions. On the November Ballot are: For Secretary of State: (D) current Lt. Governor Garlin Gilchrist VS (R) Anthony Forlini the current Macomb County Clerk. For Attorney General: (R) current Eaton County Prosecutor Doug Lloyd VS (D) Eli Savit, the current Washtenaw County Prosecutor. Both the Governor and U.S. Senate nominees for each party will be decided in the August Primary.

Proof of Citizenship

Recently the Michigan House passed legislation on a party-line vote (all R yes/all D no) requiring proof of citizenship to register to vote. The legislation would require individuals to

provide proof of U.S. citizenship when registering to vote and show identification when casting a ballot. The proposal is similar to the federal SAVE Act, which has sparked fierce debate over election security and voter access.

U.S. Forest Service/Michigan

The Trump administration recently announced plans to close four U.S. Forest Service research facilities in Michigan, shifting scientists out of the state as it reorganizes and consolidates the agency. Officials have not announced a closure date for the facilities, located in the Lower Peninsula communities of East Lansing and Wellston, between Manistee and Cadillac, and the Upper Peninsula communities of Houghton and L'Anse, saying changes will be implemented over the next year. The Forest Service headquarters will also move from Washington, D.C., to Salt Lake City in what Agriculture Secretary Brooke Rollins described as a measure to save money, boost logging and put workers "closer to the landscapes we manage."

Fish Fry

The Annual Legislative Fish Fry . . . and Timber industry extravaganza . . . will Take place on Wednesday June 10, 2026 . . . 12 Noon . . . across the street from Capitol Building. **All LSLA Members invited.**



Whitefish

Fish Fry
@ Capitol White House
Wednesday
June 10, 2026

12 Noon to 2 PM
322 West Ottawa St.



Lake Trout

Walleye

Perch

Freshly Caught From The Great Lakes

Wisconsin Legislative Report

By Amy Boyer, WI Legislative Consultant



Wisconsin End of Session Report

The Wisconsin legislature has officially adjourned its 2025-2026 regular session. All bills that have passed both houses have been sent to Governor Evers for final action. Legislation of interest follows:

2025 Wisconsin Act 164 creates an “aviation biofuel manufacturing zone” (ABMZ) and authorizes a business to claim an income tax credit for an “aviation biofuel project” (ABP) This \$120 million grant is to be administered by the Wisconsin Economic Development Corporation (WEDC). Under the bill, “biofuel” is defined as fuel created by utilizing organic matter derived from wood, of which at least 80% must be sourced in Wisconsin, as measured by aggregate volume over a five-year period.

2025 Wisconsin Act 242 creates a \$17 million annual income and franchise tax credit program for rail infrastructure modernization, which would be administered by the Wisconsin Economic Development Corporation (WEDA). The program is aimed at short line railroad maintenance and new rail infrastructure expenditures. The maintenance portion of the tax credit program may be claimed by Class II or Class III railroads, while the infrastructure portion may be claimed by the Class II or Class III railroads as well as owners or lessees of a rail siding, industrial spur or industry track.

2026 Buyers Guides

There are extra copies of the 2026 Buyers Guides available. The 2026 Buyers Guides were mailed out in early April to each company who paid membership dues for 2026. If your company would like additional copies, they are available for \$15 each (member price). Non-members may purchase a copy for \$50. Contact the LSLA office if you are interested (920-884-0409 or email us at lsla@lsla.com).





Senate Bill 7, which was VETOED by Governor Evers, would have prohibited certain foreign principals from acquiring, owning, or holding any interest in real property in Wisconsin. The bill also would have required any foreign principal of a foreign adversary with interest in real property in Wisconsin to divest. Governor Evers vetoed the bill stating “I object to the Wisconsin State Legislature placing blanket prohibitions on all real property ownership regardless of the specific circumstances and whether or not any real threat exists. More specifically, I am concerned that this bill will negatively impact existing Wisconsin businesses with complex ownership structures, potentially putting Wisconsin jobs and our state’s economic momentum at risk.”

Although the Regular Session has ended, the Legislature may reconvene to address the state’s \$2.5 billion surplus. Assembly Republican leadership and the Governor’s office have been working on a potential plan that includes property tax relief, rebate checks, tip and overtime tax exemptions, and additional special education funding.

U^oC COATINGS

WOOD PROTECTION PRODUCTS

Anchorseal[®] is proven to prevent up to 90% of end-checking on logs and lumber.

BRITWOOD XL
— SAPSTAIN CONTROL —

Britewood XL is a powerful fungicide for protection against mold and sap stain.

SHADE-DRI[®]

Shade-Dri is a versatile covering to keep harmful sunlight and excessive wind from damaging logs and lumber.

1-888-363-2628 | sales@uccoatings.com | www.uccoatings.com

Buffalo | Kenosha | Portland | Seattle

Hardwood Lumber Grading Short Course

July 27-29, 2026

Northcentral Technical College
Wood Technology Center Of Excellence
312 Forrest Avenue
Antigo, WI 54409

This class is targeted for beginners and therefore will be ideal for sawyers, edgermen, trimmermen, grading trainees, sales people, managers and supervisors. The Course is open to all interested participants, whether a member of LSLA or not. Members of LSLA may register at a reduced price.

INSTRUCTORS: Logan Wells, Northcentral Technical College
Scott Bowe, UW-Kemp Natural Resources Station
Tim Kassis, Kassis Consulting

JULY 27—DAY 1

- Hardwood Lumber Grading: A Language
- Clear vs. Sound Cuttings
- Surface Measure / Cutting Unit Method
- Wood Characteristics vs. Defects
- Surface Measure Exercise
- Hardwood Lumber Manufacturing Standards

JULY 28—DAY 2

- NHLA Standard Grades
- Defect Limitations
- Hands-on Lumber Grading

JULY 29—DAY 3

- Understanding Wood Structure
- Species Exceptions / Color Sorts
- Kiln Dried Lumber
- Hands-on Lumber Grading

REGISTRATION FEE:

- \$350 for Lake States Lumber Association members
- \$450 for non-members

STUDENTS MUST BRING

- Bring a Lumber rule or lumber scaling stick (if you have one available to use)
- Notebook or clip board

Course is limited to first 35 registrants. Fee includes NHLA Rule Book and NHLA Training Manual, coffee and soda breaks, lunches, and certificate of completion for all students.

ACCOMMODATIONS (Suggested area hotels)

Super 8
Hwy 45
535 Century Ave.
Antigo, WI 54409
(715) 623-4188

Holiday Inn Express
2407 Neva Rd/Hwy 45
Antigo, WI 54409
(715) 627-7500

Sponsored by:



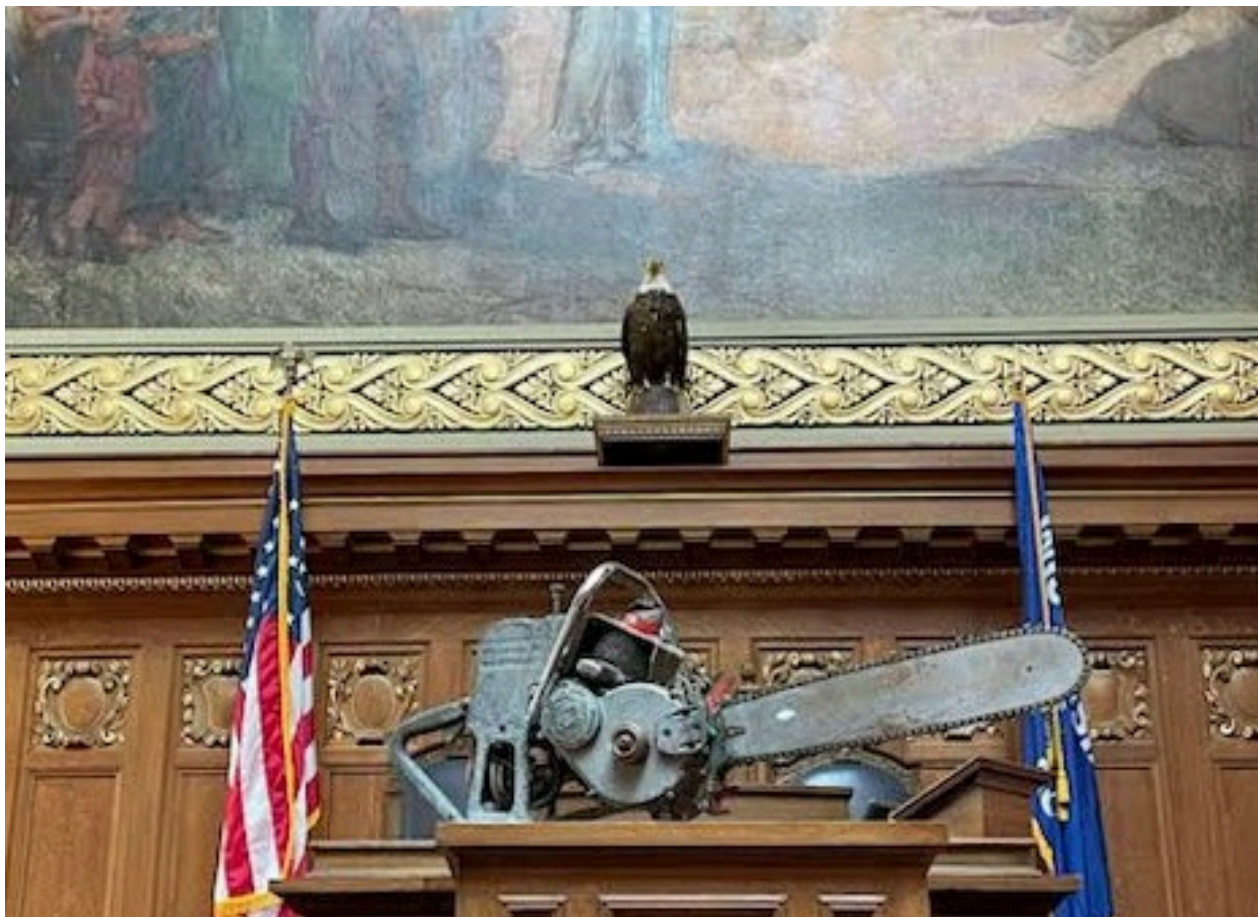
Register for the class at:

<https://www.ntc.edu/calendar/2026/07/27/lsla-hardwood-lumber-grading-short-course>

This workshop is made possible through a grant from the USDA Forest Service.

Where is David Bradley?

David Bradley presiding over the Wisconsin State Assembly.



 **MidwestHARDWOOD**
CORPORATION

*Buyers of Quality Northern
& Appalachian Green
Hardwood Lumber*

Ben Laski
Phone: 763-391-6710
benlaski@midwesthardwood.com
www.midwesthardwood.com



906-466-9010 | BurnChips.com

Biomass boiler systems | Material handling equipment
Traveling auger fuel bin | Emission control equipment



MESSERSMITH





Lake States Lumber Association
337 Superior Avenue
Crystal Falls, MI 49920



Join the advertisers of *The Log* today and start seeing the difference!

Whether you are buying or selling, *The Log* can make it simple. This newsletter is published bi-monthly and is received in many US states and Canada.

For more information, call us at (920) 884-0409 or email us at lsla@lsla.com.

Advertising Prices

1/8 Page Ad	\$67.50/Issue
1/4 Page Ad	\$135.00/Issue
1/2 Page Ad	\$270.00/Issue